



ALUMIMUM FENCES

ALUMINUM FENCES

FIBERWOOD aluminum fences are made from a high-quality pure aluminum alloy 6063 T6 and a satin black powder coating or wood finish.

This type of fence provides maximum privacy while offering contemporary horizontal lines in style.

Choose an aluminum fence for both its aesthetics and durability. Aluminum fences are extremely durable and resistant to weather, corrosion, and rust. They do not warp, crack, or degrade over time, unlike some other fencing materials.

In addition, aluminum fences require little maintenance and can easily be cleaned with water and soap. They do not require any paint treatments or protective coatings, which saves time and money in the long run.

Don't hesitate to choose our black model, your plants will stand out dramatically with this type of fence as a background.



CHOOSE YOUR STYLE

Three (3) fence styles are available:

- 1- Open Fence
- 2- Solid Fence
- 3- Top Fence

OPEN STYLE: allows sunlight to pass through the spaces between the horizontal boards, maintaining plant and lawn health while brightening dark areas of your garden.

SOLID STYLE: choose a private and contemporary style. Solid fences provide maximum privacy while combining aesthetics and durability.

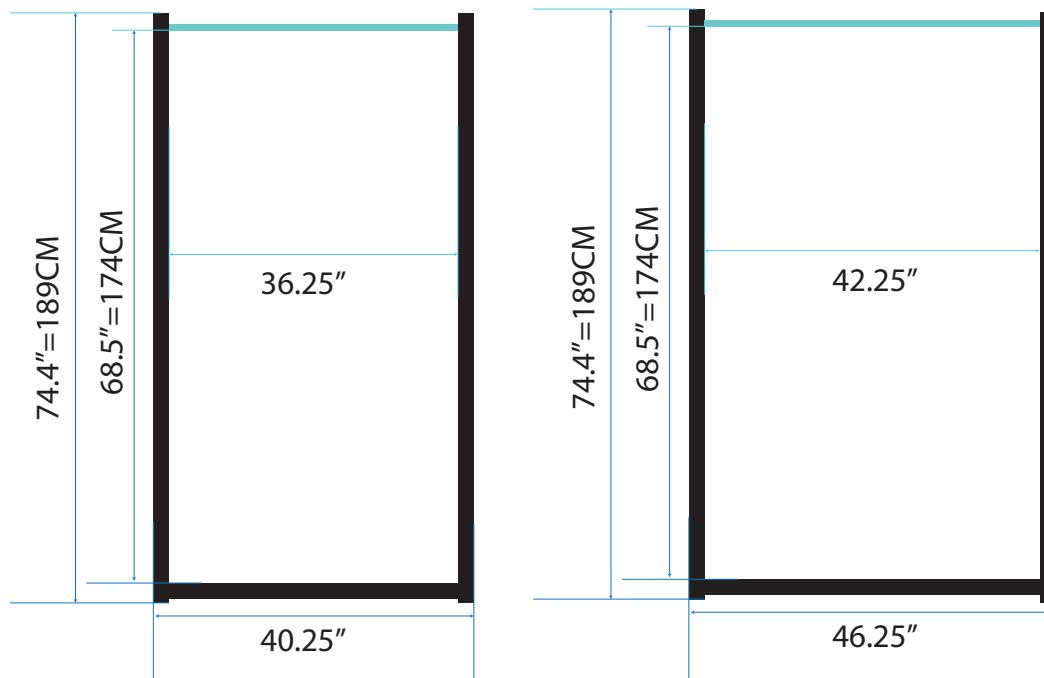
TOP FENCE: Aluminum fence toppers are a popular aesthetic option that will add a touch of elegance to your property while providing a long-lasting, durable solution.



ALUMINUM DOORS

Fiberwood offers 3 aluminum door structures:

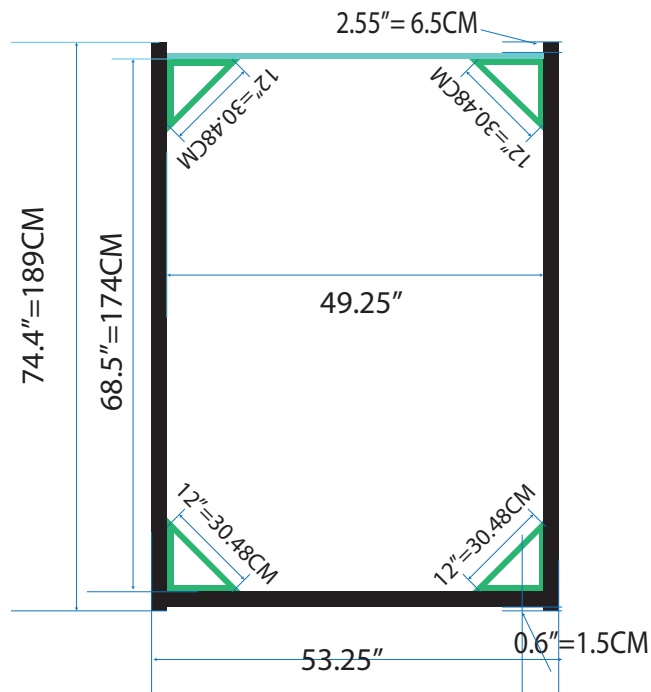
- 40.25" black finished aluminum door structure
- 46.25" black finished aluminum door structure
- 53.25" black finished aluminum door structure



Customize your outdoor fence according to your tastes with our aluminum door structures. Choose from our options of open or solid boards to create the perfect appearance for your property.

Our aluminum boards are available in 3 colors for maximum customization: black, light brown, and dark brown.

Whether you're looking to create a modern and elegant look or something more rustic and traditional, our aluminum door structures offer the flexibility to meet your style needs.



A photograph of a modern backyard. In the foreground, a wooden fence with horizontal slats and black metal railings runs along the left side. To the right of the fence is a green lawn. In the background, there is a concrete patio and a swimming pool with blue water. A large, dark green hedge is visible behind the pool, and a small building with a chimney is visible in the distance under a clear blue sky.

BOARDS, STRUCTURES & ACCESSORIES

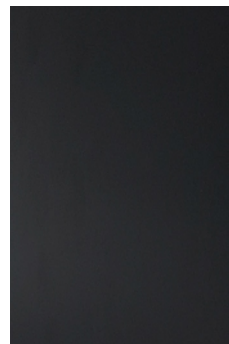
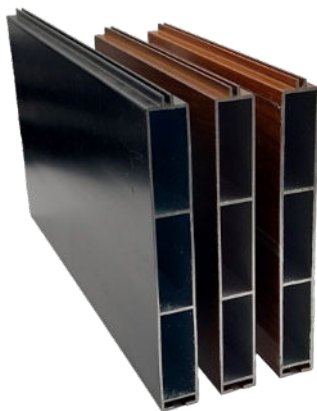
THE THREE TRENDING COLORS OF 2023

Colors have a huge impact on the appearance of your property. That's why Fiberwood is pleased to introduce the three trending colors for 2023 for aluminum fences: black, dark brown, and light brown.

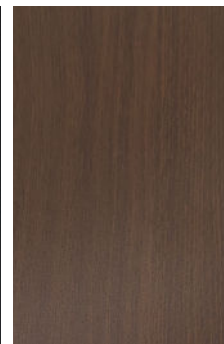
Black is a timeless color that evokes sophistication and modernity. This color pairs perfectly with any home, regardless of its architecture. A black aluminum fence will create a sleek and elegant appearance that will elevate your property.

Dark brown is a warm and natural color that blends perfectly with green spaces, creating a timeless appearance and adding character to your outdoor living space.

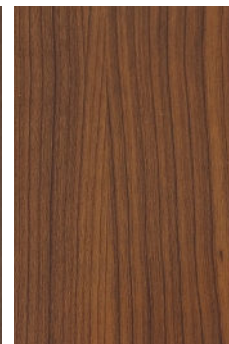
Light brown is a unique color that combines subtle shades of brown and orange. An aluminum fence in light brown will create a contemporary and sophisticated appearance that will catch everyone's eye.



Black



Dark Brown



Light Brown



CP-ALPAN-01
Aluminum Fence
Wood Grain – Dark Brown



CP-ALPAN-02
Aluminum Fence
Wood Grain - Light Brown



CP-ALPAN-04
Aluminum Fence
- Black



CP-ALPAN-05
Aluminum Top Fence
3in x 6ft - Black

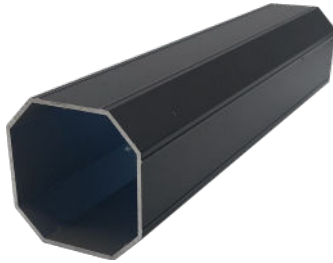


CP-ALPAN-4P
Aluminum Fence
3in x 6ft - Black



CP-ALPAN-4P-TG
Aluminum Fence
4in x 6ft - Black

STRUCTURES & ACCESSORIES



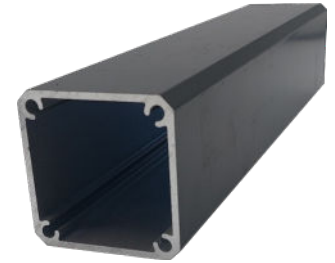
CP-ALU-SL-01
Aluminum Sleeve
3in x 4ft - Mill Finish



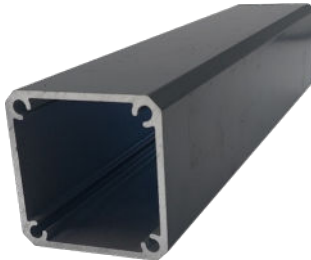
CP-ALU-SL-03
Aluminum Sleeve
3in x 5ft - Mill Finish



CP-ALPOST-01
Aluminum Post
3in x 9.7ft - Black



CP-ALPOST-03
Aluminum Post
2.5in x 9.7ft - Black



CP-ALPOST-03-7F
Aluminum Post
2.5in x 7ft - Black



CP-ALPOST-02C
Aluminum Corner Post
Curved, 47in - Black



CP-ALPOST-02F
Aluminum Corner Post
Flat, 47in - Black



CP-ALPOST-48C
Aluminum Corner Post
Curved, 48in - Black



CP-ALPOST-48F
Aluminum Corner Post
Flat, 48in - Black



CP-ALPOST-73C
Aluminum Corner Post
Curved, 73in - Black



CP-ALPOST-73F
Aluminum Corner Post
Flat, 73in - Black



CP-ALCAP-01
2.7x2.7in Aluminum Cap
for Post of 2.5in - Black



CP-ALCAP-02
3.5x3.5in Aluminum Cap
for Post of 3in - Black



CP-ALCAP-2X2
Aluminum Cap
for Post of 2in - Black



CL-ALCOVER-1
5x5in Aluminum Cover
for Base of 2.5in - Black



CP-ALCOVER-2
5x5in Aluminum Cover
for Base of 3in - Black

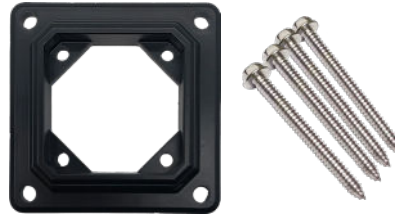
STRUCTURES & ACCESSORIES



CP-ALPLATE-01
4.72x4.72in Aluminum Plate
for Base of 2.5in - Black



CP-ALPLATE-01-2023
4.72x4.72in Aluminum Plate
for Base of 2.5in - Black



CP-ALPLATE-02
4.72x4.72in Aluminum Plate
for Base of 3in - Black



CP-ALPLATE-02-2023
4.72x4.72in Aluminum Plate
for Base of 3in - Black



CP-ALUC-01
Aluminum Side U-Channel
73in - Black



CP-ALUC-02
Aluminum Top U-Channel
72in - Black



CP-ALUBC-WPCFR
Aluminum Bottom U-Channel
for ROYAL fence, 73in - Black



CP-ALUSC-WPCF-CB
Aluminum Side U-Channel
1 side closed, 73in - Black



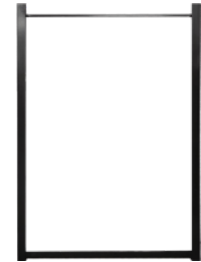
CP-SPACE-01
Nylon Spacer
for Composite Fence - Black



CP-ALUG-42
Aluminum Door
of 40.25in - Black



CP-ALUG-48
Aluminum Door
of 46.25in - Black



CP-ALUG-55
Aluminum Door
of 53.25in - Black



CP-ALULS-4X4
Aluminum L-Bracket
4x4in - Black



CP-ALULS-4X5.5
Aluminum L-Bracket
4x5.5in - Black



CP-ALU-GH
Aluminum Gate Handle
for Composite - Black



CP-DD-BLK
Vertical Lock Kit for Co-extrusion
Composite or Aluminum Double Doors